

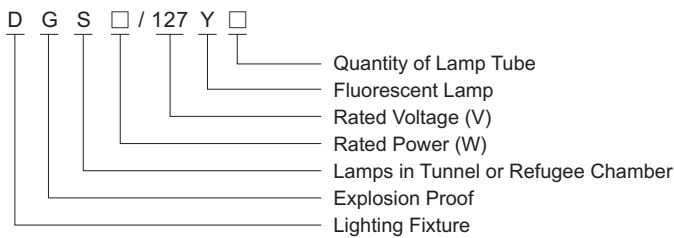
DGS20/127(Y) Mining Explosion Proof Fluorescent Lamp



Use

It is used for priming illumination in tunnel or chamber and in the coal mine where is filled with explosive gas mixture of methane, coal dust, etc. When the fluorescent lamp is used in the coal mine, parking lot, main substation, pump room or main laneway, the fresh air should exist in these places.

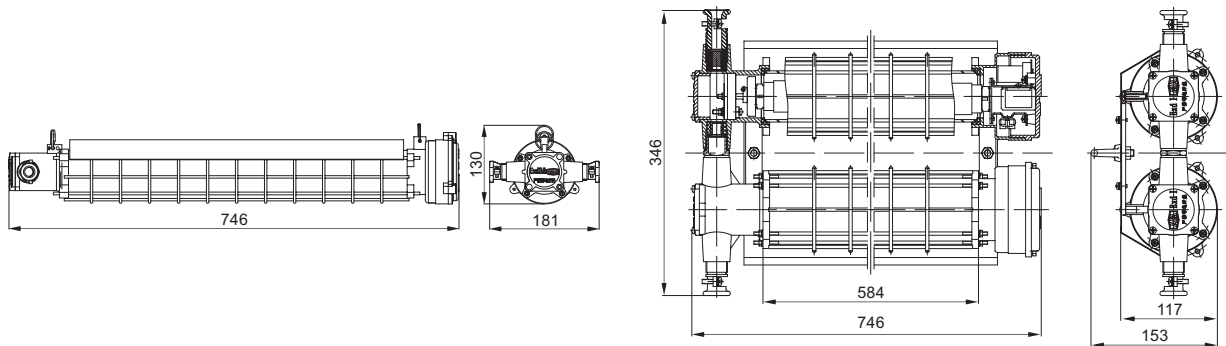
Meaning of Type



Technical Descriptions

High brightness, easy for installation, safe and reliable, fast replacement for lamp tube.

Dimension Drawing



Technical Data

Type	Rated voltage (V)	Rated power (W)	Luminous flux (lm)	External diameter of cable(Φmm)
DGS20/127Y-1	127	20	500	10~14
DGS20/127Y-2		40	1000	10~14